

Solution Note

Cisco Advanced Technologies Service Configuration
Redcell™ Service Provider Solutions**Key Features of Redcell****Deep Discovery & Inventory**

- Single database & GUI for consistent IPSec, MPLS VPN and Firewall Service configuration and activation
- All H/W, S/W, physical & logical sub components

Topology

- Hierarchical visual mapping with alarm propagation

Configuration Management

- Real-time/discrete configuration changes
- Detailed configuration of advanced technologies

File, OS Management

- Backup, restoration, archiving, deployment and comparison

Change & Compliance Management

- Change detection & policy-based evaluation

Comprehensive Reporting

- Inventory: By Device, Sub component, Service
- Change/Compliance: Who, What, When, How

Health & Performance Monitoring

- Real-time device health and performance

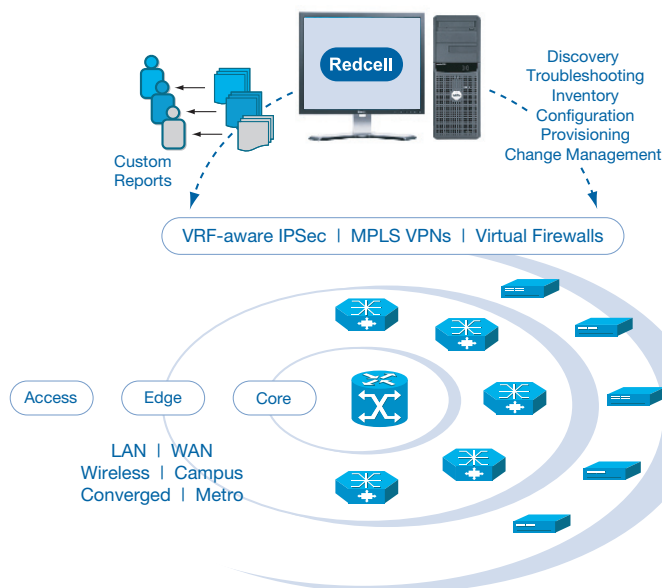
User Security Management

- Multi-level security for individual user and group administration

Redcell integrated network and service management for Cisco advanced technologies.

Redcell Service Provider Solutions for Cisco provide a solid foundation so you can build successful and scalable service offerings for next generation security, Ethernet, VPN and other services, delivering the level of service and range of options your customers expect. With visibility across the network and powerful management tools, Redcell enables you to guarantee availability and performance—and when service level agreements are not being met, Redcell alerts you to proactively solve problems before they impact end-users.

Redcell lets you capitalize on your Cisco advanced technologies, such as network-based security services, MPLS VPNs, VRF-aware IPSec VPNs, virtual firewall services and more.

Redcell Service Configuration for Cisco**Redcell's open system platform manages all devices in your IT infrastructure.**

- From a single console, effectively manage all heterogeneous storage devices, switches, PCs, servers, printers, routers in IT environment
- Improve efficiency by automating tasks across all devices
- Always know the granular inventory of complete IT environment

Technical Specifications

Vendor Specific

Line Card Support

- Fast Ethernet
- Gigabit Ethernet
- Controller Cards
- ATM
- Channelized OC-x
- Multilink Services
- SONET/SDH
- T1/E1
- T3/E3
- Tunnel
- Multi-service blade
- IPSec SPA

Operating Environments

- Windows 2000, XP, 2003
- Solaris 9
- Red Hat Linux

Database

- Embedded database or Oracle

Interface Support

- SNMPv1/v2/v3; Proprietary Device CLI, XML, SSH SOAP/ Web services, RMI/IIOP, TL1

Comprehensive Cisco Support

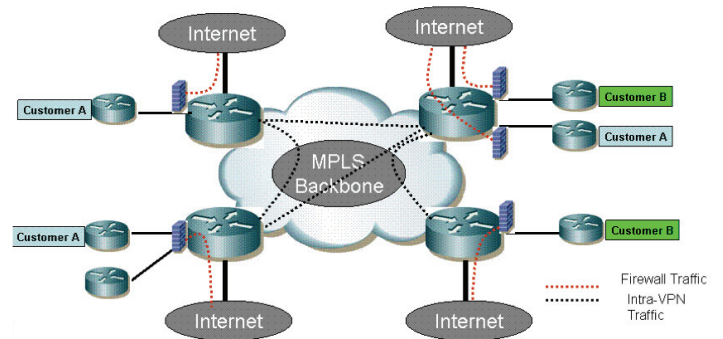
- Network-based Security Services Solution
- Integrated Services Routers (ISR)
- Head Office / WAN Routers
- VPN Aggregation Routers
- Core & Service Access Routers
- ASA Security Appliances
- PIX Firewalls
- Catalyst Switches
- Aironet Wireless Devices
- ONS Optical Equipment

Solution Examples

Redcell Virtual Firewall Security Solution

Customer with virtual firewall solution showing simultaneous MPLS VPN and Internet access.

VPN service w/Internet Offload—customer site has simultaneous access to MPLS VPN services and Internet services. Internet services are secured using a virtual Firewall service attached to the VRF.



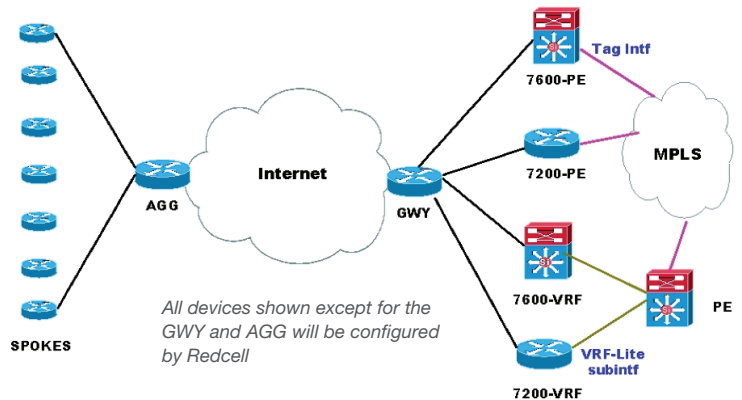
Redcell Network-based Security Service Configuration

VRF-Aware IPSec

- System Configuration
- Crypto Objects
- IPSec Configuration

Firewall Services

- Resource Classes
- ACLs
- NAT / PAT / Static NAT
- Routing
- URL Filtering
- Firewall Inspection



Redcell MPLS VPN Service Configuration

Redcell lets providers configure and manage the infrastructure as well as services.

Typical Layer 3 MPLS VPN Service showing multiple customers running on a service provider's shared network.

